

Traveling around our region can be challenging, but together we can find ways to improve it. It starts with understanding what is working for residents and commuters and where there are areas for opportunities. That's what the Westpark Tollway study is all about!

The study will deliver a comprehensive plan to:

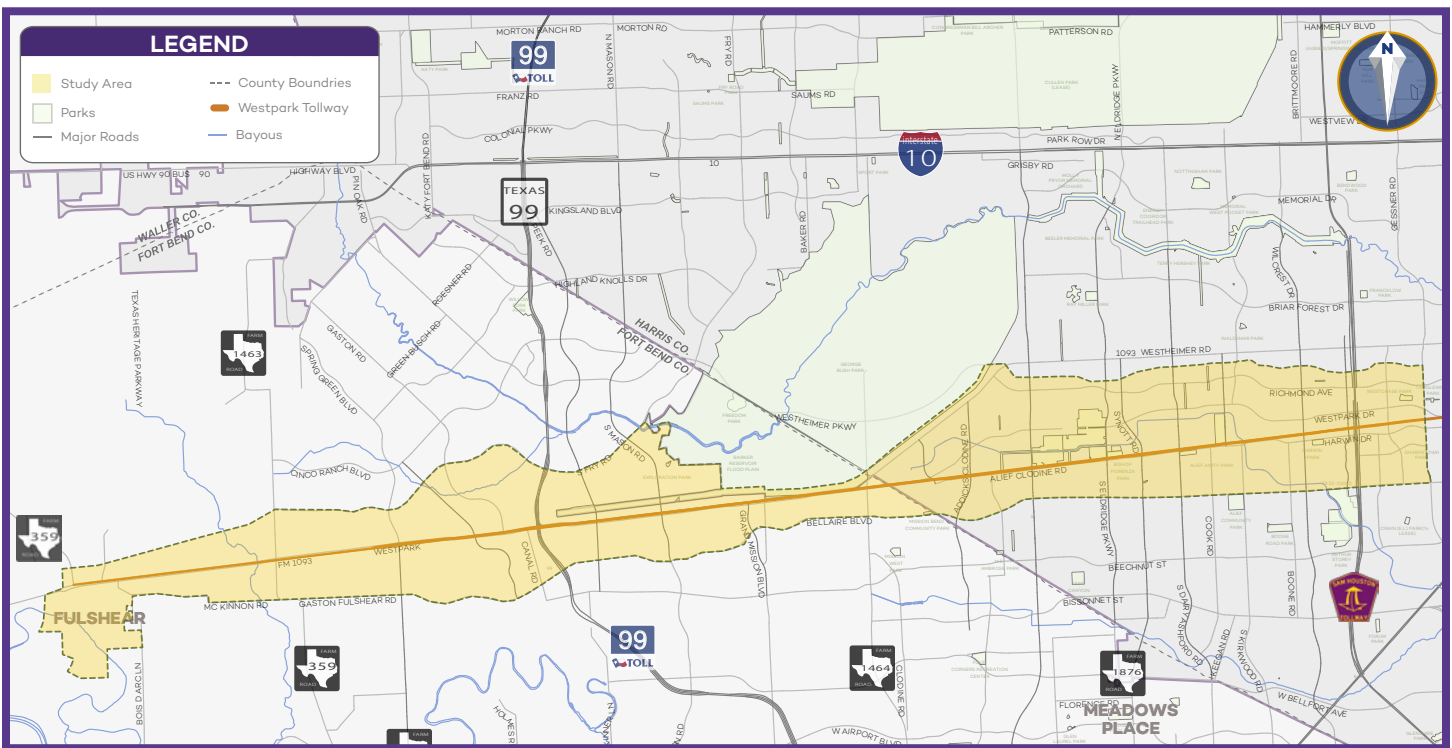
- Improve safety,
- Increase efficiency and mobility,
- Minimize impacts on people and the environment,
- Support existing communities, and
- Encourage economic growth along the Westpark Corridor.

We Need to Hear From You!
Your insights can help shape the future of the Westpark Tollway Corridor!

Take our survey by scanning the QR code below!

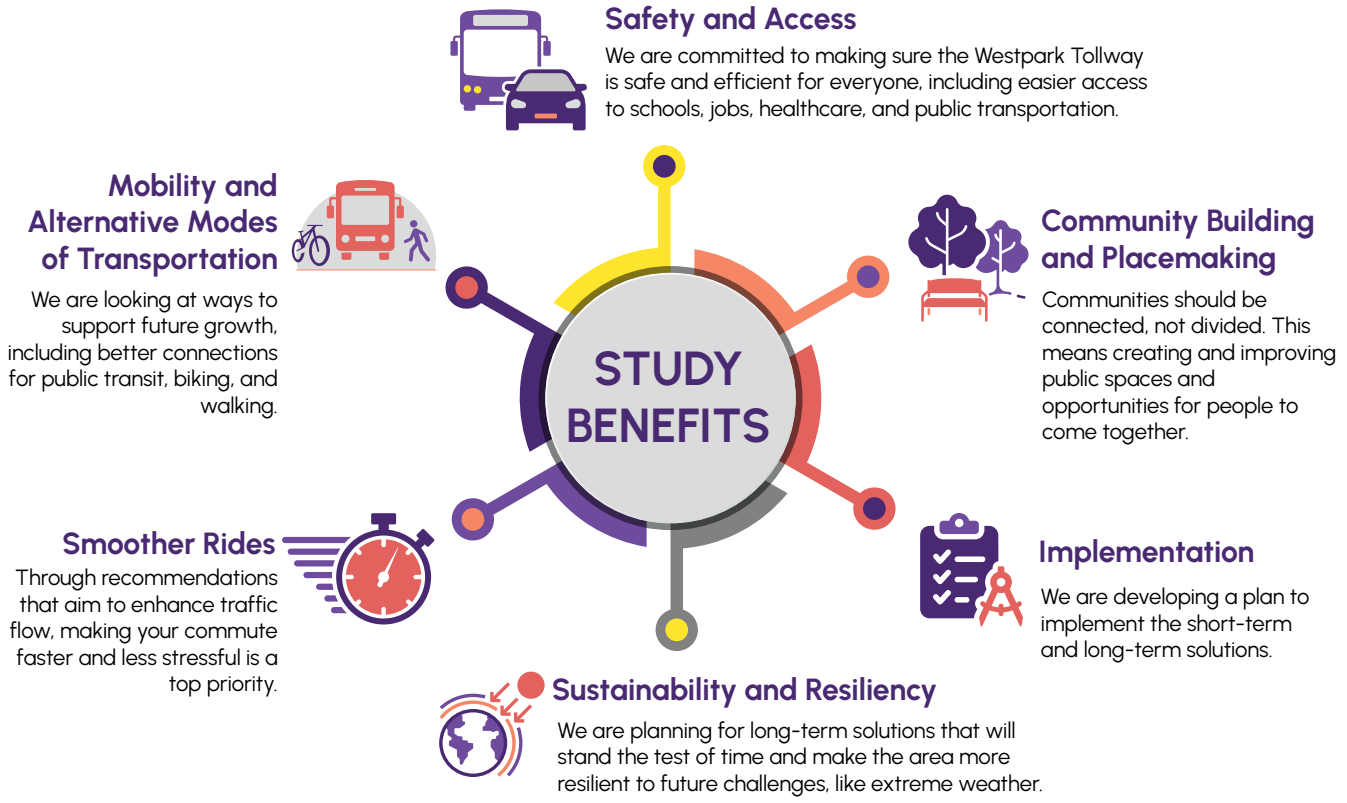
Learn more about the study and share your feedback by visiting our website at westparkmobility.org or emailing us at info@westparkmobility.org.

We are counting on YOU to help shape the future of the Westpark Tollway Corridor!



The study area includes Westpark Tollway from South Gessner Road, just east of the Sam Houston Tollway, to FM 1093 / FM 359 / Main Street in Fulshear and includes the planned extension of the Westpark Tollway to Fulshear.

HOW WILL THE STUDY BENEFIT ME?



STUDY ROADMAP

